

ROSE VALLEY ELEMENTARY SCHOOL
Parent Advisory Council: School Report

At RVE we Notice, Encourage, and Celebrate each other!

Wednesday October 16th, 6:30 pm, Library Learning Commons
Reporting: Jesse Bruce, Principal

TEACHING AND LEARNING

SHELLEY MOORE	INCLUSION
GILLIAN JUDSON	INSTRUCTIONAL DESIGN + ENGAGEMENT
ANNE DAVIES	ASSESSMENT + COMMUNICATING STUDENT LEARNING
OPAL SCHOOL	INNOVATIVE LEARNING ENVIRONMENTS

LET THEM EAT DIRT OUTDOOR PLAY CONFERENCE **NOVEMBER 1-2**

ADMINISTRATION AND MANAGEMENT

School Community Learning Plan
Invitation for parents to participate as collaborative partners – see letter

Learning Summary Report and E Portfolio
Invitation to FreshGrade E Portfolio

Technology Refresh
Intermediate Teachers participating in "Technology For Learning" Inquiry Group

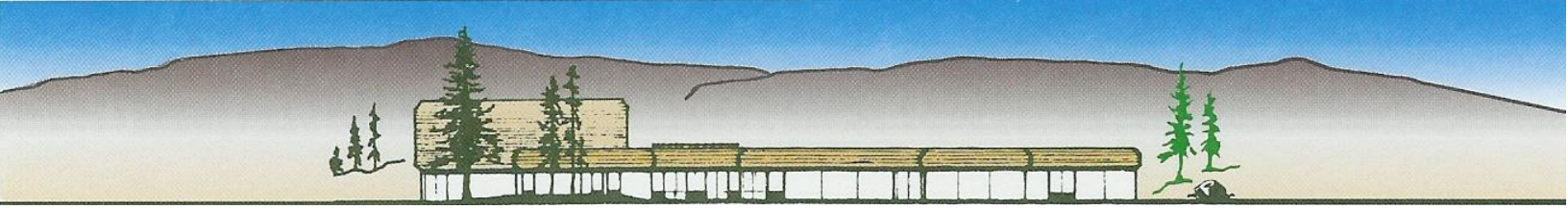
REPORTS

Foundation Skills Assessment
RVE student participation rates and School Assessment Data

FUNDING REQUESTS

See E mail and PAC Budget Requests

A collaborative learning community. We all belong, have purpose, and strive to be contributing global citizens.
- Respect – Responsibility – Kindness – Community –



Calendar and Events

BELL SCHEDULE:

8:25	Welcome Bell			
8:30	Starting Bell			
11:10	Lunch Bell	Play 11:10-11:14	Eat 11:40 – 12:-03	Clean up 12:03-12:08
12:08	Starting Bell			
1:30	Recess	Play 1:30-1:45		
1:45	Starting Bell			
2:30	Dismissal			

OCTOBER 11	IMPLEMENTATION DAY – NO SCHOOL
OCTOBER 12-15	E PORTFOLIO
OCTOBER 14	THANKSGIVING – NO SCHOOL
OCTOBER 22	DROP EVERYTHING AND READ
OCTOBER 25	PROFESSIONAL DEVELOPMENT DAY – NO SCHOOL
OCTOBER 31	HALLOWE'EN PARADE
OCTOBER 31	STUDENT LEADERSHIP LUNCH
NOVEMBER 8	REMEMBRANCE DAY ASSEMBLY
NOVEMBER 11	REMEMBRANCE DAY – NO SCHOOL
DECEMBER 11	K-2 CONCERT
DECEMBER 12	3-5 CONCERT