

ROSE VALLEY ELEMENTARY SCHOOL

1680 Westlake Road, West Kelowna, BC V1Z 3G6
Telephone: (250) 870-5146 Fax: (250) 870-5047

RVE is a collaborative learning community. We all belong, have purpose, and strive to be contributing global citizens.

- Respect – Responsibility – Kindness – Community -

Next Week's Events:

Monday, April 15 - 2:30-4pm Grade 4/5 Drop-in Co-ed Outdoor Touch Rugby

Tuesday, April 16 - 11:10 Cross-country Team Trail Run
- 2:30-4pm Grade 4/5 Drop-in Co-ed Outdoor Touch Rugby

Wednesday, April 17 - Hot Lunch-Burrito & Curry Day
- Warkotsch/Roffey-Village at Smith Creek 9:30-11:15
- 2:30-4pm Grade 4/5 Drop-in Co-ed Outdoor Touch Rugby

Thursday, April 18 - Battle of the Books 9-1 at Helen Gorman
- Springer/Roffey/Warkotsch-Shannon Lake Park 9:45-2
- Grade 4/5 Track and Field 12:10-2:10
- 2:30-3:30pm Rugby/Cross-country Team Trail Run

Friday, April 19 - Good Friday – NO SCHOOL

Upcoming Events:

Monday, April 22 - Easter Monday – NO SCHOOL

Tuesday, April 23 - 11:10 Cross-country Team Trail Run
- 2:30-4pm Grade 4/5 Drop-in Co-ed Outdoor Touch Rugby

Wednesday, April 24 - CLASS PHOTO DAY
- Hot Lunch-All Bagel Day
- 2:30-4pm Grade 4/5 Drop-in Co-ed Outdoor Touch Rugby

Thursday, April 25 - Grade 4/5 Track and Field 12:10-2:10
- 2:30-3:30pm Rugby/Cross-country Team Trail Run

Friday, April 26 - Hot Lunch-Pizza Day

Parents:

Please remember that school fees are now DUE. Go to our RVE website and create an account for online payments under the On Line Payment link.

Remember to report student absences with our new reporting system called SafeArrival, get the app today!



**Central Okanagan
Public Schools**

Together We Learn

READY, SET, LEARN

The schools in the Central Okanagan Public School District will be providing Early Learning opportunities for families to build connections between home and school. *Research clearly indicates that when parents are involved in their children's education, their children do better.*

The Early Learning opportunities includes a district program called ELFF (Early Learning for Families) as well as Ready, Set, Learn which is a school readiness initiative sponsored by the Ministry of Education. These programs, held in conjunction with each other, provide an opportunity for elementary schools to influence school readiness of children.

Our ELFF/Ready, Set, Learn program will include:

- Enjoying healthy food
- Learning together
- Playing together with our children



Check the schedule for the dates that your neighbourhood school is offering this program and then please contact your school for the time of their event and instructions on how to register.

Elementary School	Address	Phone #	1 st Event	2 nd Event	3 rd Event
Belgo	125 Adventure Rd.	(250) 870-5115	Apr. 17		
Chief Tomat	3365 E. Boundary Rd.	(250) 870-5127	Apr. 16		
Chute Lake	5240 Lark St.	(250) 870-5139	Apr. 17		
George Pringle	3770 Elliot Rd.	(250) 870-5103	May 15		
Glenmore	960 Glenmore Dr.	(250) 870-5136	Apr. 18		
Glenrosa	3430 Webber Rd.	(250) 870-5142	May 2		
North Glenmore	125 Glenmore Rd. N.	(250) 870-5128	Apr. 25		
Peachland	5486 Clements Cres.	(250) 870-5122	Apr. 17		
Pearson Road	700 Pearson Rd.	(250) 870-5118	Apr. 16		
Peter Greer	10300 Sherman Drive.	(250) 870-5129	Apr. 10	Apr. 24	May 8
Quigley	705 Kitch Rd.	(250) 870-5134	May 1		
Raymer	657 Raymer Ave.	(250) 870-5125	May 2		
Rutland	620 Webster Rd.	(250) 870-5126	May 8		
Shannon Lake	3044 Sandstone Dr.	(250) 870-5132	Apr. 25		
South Kelowna	4176 Spiers Rd.	(250) 870-5107	Apr. 25		
South Rutland	200 Mallach Rd.	(250) 870-5113	Apr. 24		
Watson Road	475 Yates Rd.	(250) 870-5137	May 15 am	May 15 pm	



Spring Showcase for the Arts

UPCOMING EVENT! Rose Valley will celebrate and come together to share our love for all disciplines of the Arts and student creativity!

Starting this month, students will be starting an inquiry into their favourite form of artistic expression. We will be spending class time exploring what discipline speaks to their passion and allows them to communicate their THOUGHTS and FEELINGS to others. We will also be guiding students through the creative process and how to make their work ORIGINAL. The vast amount of preparation will be completed on their own time out of school.

Fast track ahead to the end of May when students will be participating in a voluntary ARTS SHOW & SHARE in their classrooms. What fun to show peers their creations! Teachers will then be nominating performances and artifacts for the SPRING SHOWCASE which is a school-wide event in mid June.

We are thrilled to offer this opportunity to all students of Rose Valley Elementary; to explore their interest in the Arts and to grow and develop as artists in the many different facets of expression.

Come join us in our celebration!

Sincerely,

Mrs. Clevette & Ms. Noort

★ RVE PAC PRESENTS ★

SPRING CARNIVAL

VOLUNTEERS NEEDED

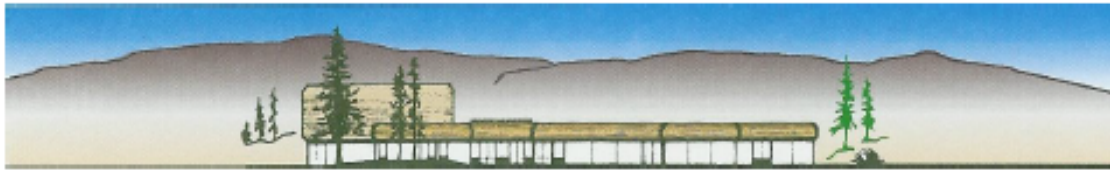


FRIDAY, MAY 31, 2019

5:00 - 8:00 PM

SILENT AUCTION · CAKE WALK · FACE PAINTING · BOUNCY CASTLES
GAMES AND PRIZES · DUNK TANK · CONCESSION & MORE!

Please contact Brittany Kort at 250-869-7813 or brit_509@hotmail.com



ROSE VALLEY ELEMENTARY SCHOOL

1680 Westlake Road, West Kelowna, BC V1Z 3G8
Telephone: (250) 870-5146 Fax: (250) 870-5047

We all play a part in creating a safe environment for Rose Valley students !

Each member of our Learning Community has a responsibility in ensuring the safety of every Rose Valley student. Take care when driving or walking your children to and from school.

We are mindful that walking and driving conditions become more challenging with seasonal changes. Please prepare for unpredictable weather conditions and give yourself extra time for drop off and pick up.

Let's lead by example:

- School Zone times are 7:30am – 5:00pm
- Use the new, clearly marked Cross-Walk
- Yield to pedestrians when entering and exiting the RVE drop off loop
- It is illegal to make U-turns in school zones (ie. on Westlake Rd.)
- Avoid parking vehicles on sidewalks, making it difficult for students walking to and from school.

When in residential areas, the following parking prohibitions apply when parking or stopping a vehicle. A vehicle must not be:

- In front or within three metres of a public or private driveway
- On a crosswalk or within six metres of the approach side of a crosswalk
- Within 6 metres upon the approach to a stop sign or yield sign at the side of a roadway

RVE Parking and Drop Loops:

Bottom (bus) Loop

- AM DROP OFF ONLY. NO IDLING. NO PARKING. Pull forward (YMCA entrance)
- PM PICK UP ONLY. PARK BUT PLEASE DON'T IDLE. WAIT BEHIND BUSES.
- AM and PM, please do not block blue bins / parking space. Cones indicate no parking.

Top (portable) Loop AM and PM

- AM Drop Off and PM Pick Up possible
- Do not block drive through loop. Please pull into an available parking space if needed

This area will become increasingly more crowded in the winter months, Sight lines and available space will be overtaken by piles of plowed snow. Please be careful.

Thank you for contributing to the safety of our students and community members.

Jesse Bruce, RVE Principal
Dave Gibson, Regional Traffic Safety Officer



Central Okanagan
Public Schools

Together We Learn

School Bus Registration for the 2019-2020 school year is open!

IMPORTANT

Parents must register their child for school bus transportation each year.
Please use the link below to register your child for the school bus.

<https://transportation.sd23.bc.ca/>

Students must be registered to ride on the school bus

*Transportation rates will be determined in April of each school year and are subject to increases.
Parents will not receive payment information until rates or discounts are determined.*

*We ask that you please register your child for the 2019-20 as this is required for
Transportation to plan bus routes for the upcoming school year.*

1. Courtesy riders are not assigned a seat until **August** and will only be offered school bus transportation if:
 - a) seat space is available on the school bus
 - b) the student meets the bus at an existing stop on the bus route
2. School bus registrations for ineligible or school of choice students (courtesy riders) are processed on a first come first serve basis and students are assigned to the bus route based on distance from the school. Students who reside farthest from the school will be offered a seat first.

!!STOP!!

For RED FLASHING LIGHTS
Safety is everyone's responsibility



ATTENTION: Parents, Students and Schools



Central Okanagan
Public Schools
Together We Learn

Central Okanagan Public Schools

is pleased to offer the "School Bus Stop" which is located on our website at www.sd23.bc.ca



School Bus Stop

Parents, students and schools can now sign up to receive email or text alerts when the school bus route is delayed.

To register for alerts and to view a complete list of bus routes displaying the current status, select the school bus icon on our website at www.sd23.bc.ca or go to the site directly at <https://schoolbusstop.sd23.bc.ca>

Our first priority is the safety and well-being of our students. Due to the varied reasons our school bus routes may be delayed or in extreme situations, cancelled, it is not practical for drivers or staff to personally phone all those affected. Safety is everyone's responsibility and we must all be diligent when staying up to date on the status of our school bus routes.

All school bus route cancellations and delays in excess of 15 minutes will be posted on the "School Bus Stop"

If you have signed up for the alerts, upon posting the delay, you will receive an email or text with the route delay, length of delay and reason for the delay.

You could also expect to see general alerts when weather conditions or an emergent situation arises regarding the bus route.

TRANSPORTATION SERVICES

7:00 AM—5:00 pm

250-870-5151

transportation@sd23.bc.ca

STAY INFORMED ON BUS ROUTE DELAYS—SIGN UP TODAY!

Since 1993



presents



NEW
discounts
Check out our
Earlybird (March 31)
& June 1 discounts.

Soccer Camps 2019

- ⊗ July and August weeks
- ⊗ full days, mornings or afternoons
- ⊗ boys & girls aged 5 to 13
- ⊗ ball, tshirt & medal provided
- ⊗ FREE early drop off/ pickup

**1 location
in
Kelowna**



1-800-427-0536

royalsoccer.com

